



Revo Registry Cleaner

User Guide

(Updated – 29 September 2025)

CONTENTS

1. OVERVIEW	3
2. GRAPHICAL USER INTERFACE (GUI)	4
3. REGISTRY CLEANER	4
3. REGISTRY TUNER	9
3.1 Windows Appearance	10
3.2 File Explorer	11
3.3 Desktop	12
3.4 Security and Stability	13
3.5 Windows Usage	14
3.6 System	14
4. REGISTRY WATCHER	15
5. BACKUP CENTER	16
6. MENU/OPTIONS	17
7. COMMAND LINE SUPPORT	21
8. HOW TO RESTORE A FULL REGISTRY BACKUP	22
9. REGISTRATION/ACTIVATION AND UPDATE SUBSCRIPTION	25
10. FREQUENTLY ASKED QUESTIONS (FAQ) and TROUBLESHOOTING	29

1. OVERVIEW

Revo Registry Cleaner helps you to easily clean and maintain your Windows Registry, deleting invalid and leftover Registry entries, thus optimizing your Windows's performance and appearance. Cleaning such invalid data may also help you resolve and avoid malfunctions and errors using your computer.

In short, the Windows Registry is the main database used by the Windows operating system and installed programs and apps to store any kind of data they need to function properly. We may say that the Registry is the backbone of the Windows operating system, where data as installed programs, their settings, installed hardware and devices, and all Windows system and appearance settings are stored.

For example, when a program or app is installed, it writes its settings to the Registry. Some programs and apps also come with dedicated services and drivers whose information is also written to the Registry. Later, using, updating, uninstalling the program, or creating and manipulating various files with the program may cause many invalid Registry entries to appear. That may reduce the performance of your computer and potentially cause problems with existing and/or newly installed programs, as well as the operating system itself. Keeping your Windows Registry in good shape may be vital for the daily stability and reliability of your PC, no matter if it is used for work or fun.

Knowing how important the Registry is, having a Backup is highly recommended. Windows already has some built-in mechanisms to create certain kind of backups but you can easily manage it yourself using Revo Registry Cleaner's Backup Center module. It allows you to instantly create a backup of either the entire Windows Registry or only a part of it, e.g. only a hive or even a specific key. The backup process can also be scheduled and performed automatically at specific intervals.

If you want to know what changes are being done to your Registry and which program is responsible for said change(s), Revo Registry Cleaner's Registry Watcher module is the one for the job. It allows you to select any parts of the Registry so all activity is monitored: what process is accessing the Registry key or value, what exact access is requested, what is changed, etc. You can also record the activity for later examination. The Registry Watcher is a tool that can be very helpful in troubleshooting scenarios, when you are simply curious, and even for malware removal.

Sometimes tuning the various options of the operating system can be challenging as not all settings can be easily managed from Windows's GUI. Some settings can only be changed by directly modifying the Windows Registry. The Registry Tuner module allows you to easily and safely modify some less common and "hidden" settings of the Windows operating system that can have effect on security, appearance, performance, and overall quality of life during daily usage. The Registry Tuner also allows you to easily revert back any changes made in case you prefer the original behavior or if any issues happen to arise.

2. GRAPHICAL USER INTERFACE (GUI)

The main screen is divided in two – the **Commands Panel** and the **Active Tool Panel**. In the lower left part of the windows, you will see all available tools that Revo Registry Cleaner has. Clicking a tool's button, activates it. The upper left part of the window contains all available commands/actions that you can perform for a given tool

Upon starting the program, the Registry Cleaner module is activated by default. Each available scanning mode is represented by a large button on the right.



The **Menu** button is located in the upper-right corner of the window's title bar, just to the left of the minimize button. It contains both essential and general commands, including Revo Registry Cleaner's options.

After the program's first launch, you will be prompted to select a user interface theme: light (default) or dark. The user interface's colors can be customized separately, either manually or by using predefined themes: **Menu -> Options -> View -> Theme**.

3. REGISTRY CLEANER

The Registry Cleaner module is used to scan for unnecessary, obsolete, or broken Registry entries. To do so, click the button that corresponds to the scan mode you wish to perform, depending on deep you want that scan to be, also including a "Managed" mode that lets you individually choose the areas to be scanned. There is also an option to perform a "Quick Clean" that will scan the Registry, backup and clean all found issues without any further interaction from the user.

Revo Registry Cleaner – User Guide

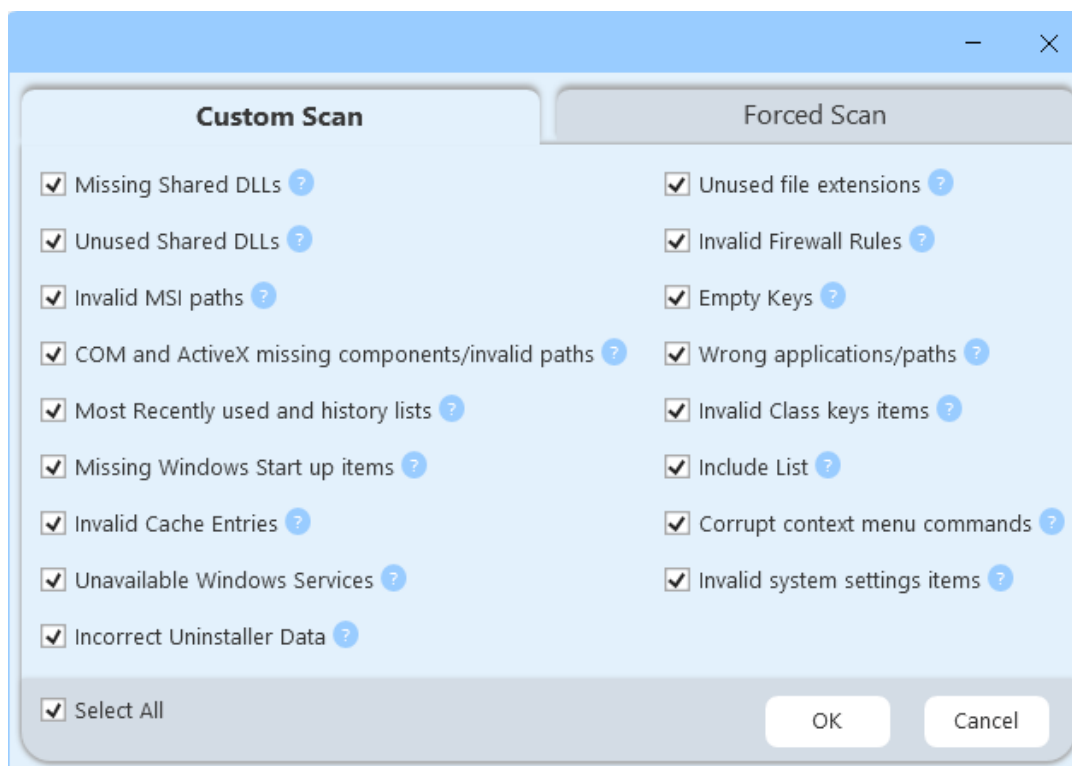
The scan modes are as follows:

Safe mode – the basic and fastest scan mode that scans the most common keys and values in Registry where unnecessary items may exist; it is recommended for beginners or users without any knowledge related to the Windows Registry.

Moderate mode – the balanced mode; includes the Safe mode but also performs an extended scan for unnecessary Registry items.

Advanced mode - includes the Moderate mode, and performs a deep and thorough scan for unnecessary Registry items.

Managed mode – lets you individually choose the categories of Registry items to scan for based on their type and location.



The categories available in the **Managed mode** are:

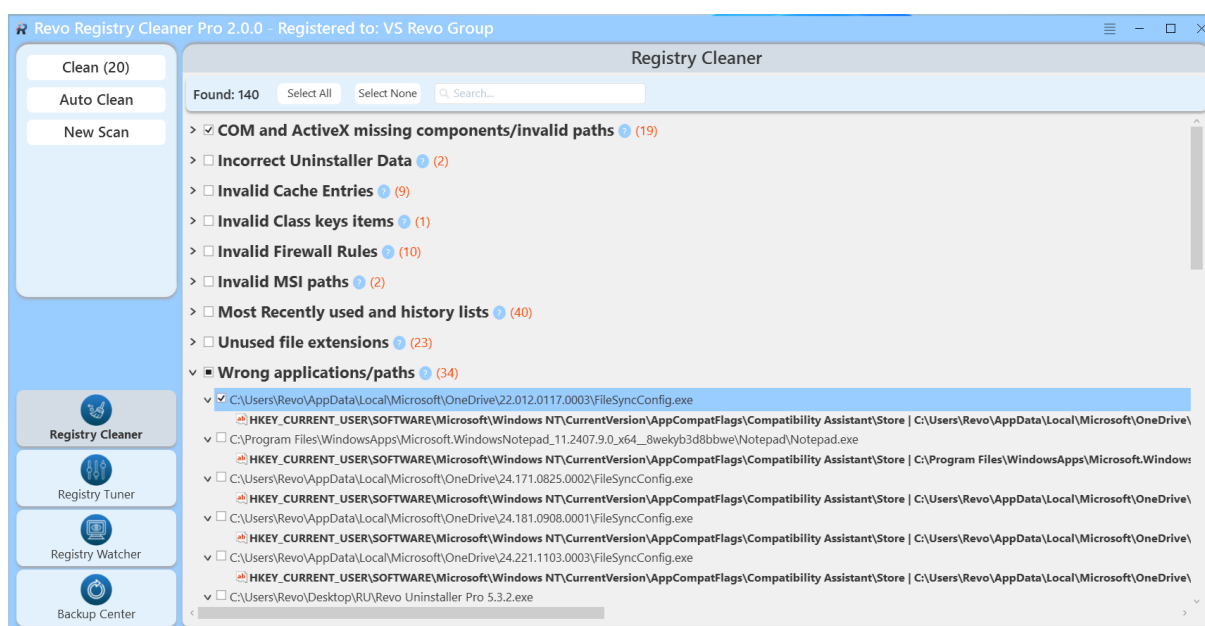
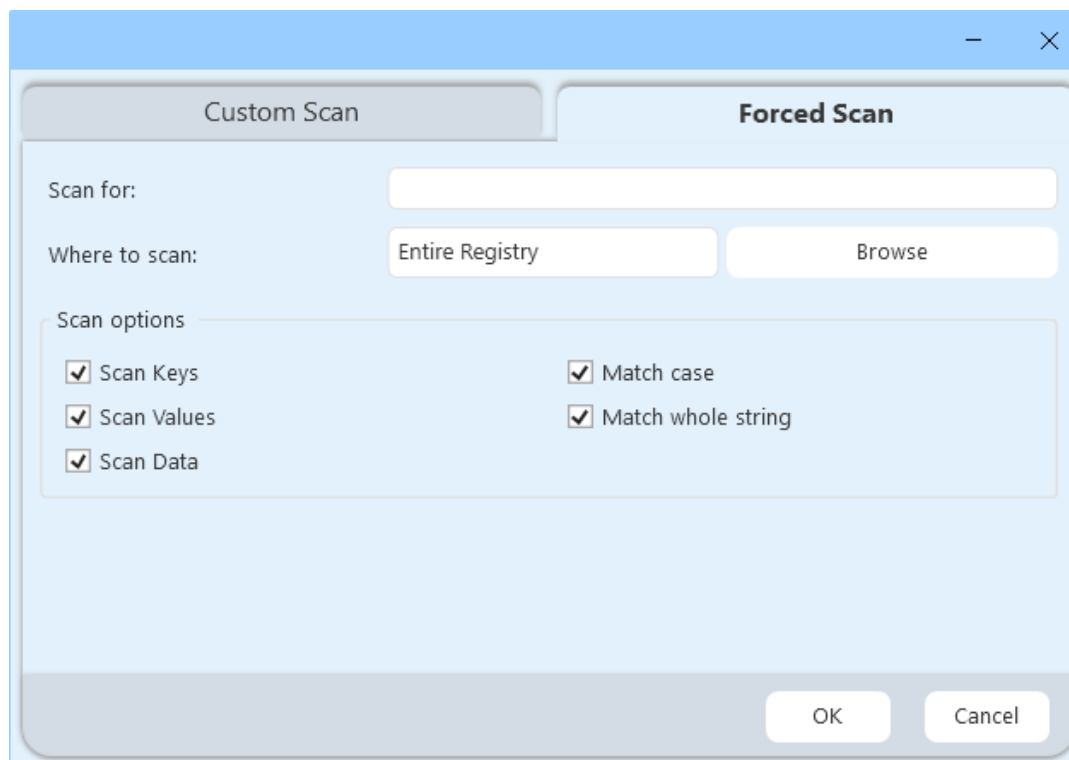
- **Missing Shared DLLs** – lists shared dynamic-link libraries (DLLs) that do not exist on the system;
- **Unused Shared DLLs** – lists shared dynamic-link libraries (DLLs) whose usage counter is set to 0;
- **Invalid MSI paths** – lists missing files and folders related to Microsoft software installer-based installations;
- **COM and ActiveX missing components/invalid paths** – lists invalid registrations of COM and ActiveX components where file and related data is missing;
- **Most Recently used and history lists** – lists history of recently accessed files, visited paths, etc. in common Windows dialogs and programs;

- **Missing Windows Start-up items** – lists invalid paths for missing applications/services/files set to start with Windows;
- **Invalid Cache entries** – lists cache entries that are no longer valid due to missing file/folder;
- **Unavailable Windows Services** – lists data of corrupted Windows services due to missing files;
- **Incorrect Uninstaller Data** – lists invalid and useless uninstaller information;
- **Unused file extensions** – lists file extensions that are not associated with any program or file type;
- **Invalid Firewall Rules** – lists Windows Firewall rules related to missing files or invalid paths;
- **Empty keys** – lists software-related keys that do not contain any data;
- **Wrong applications/paths** – lists invalid data related to missing application paths and files;
- **Invalid Class keys items** – lists useless items related to invalid file types data and corrupted components with a missing file/folder;
- **Corrupted Context menu commands** – lists data related to context menu commands that will not work due to non-existing file/folder;
- **Invalid System settings items** – lists missing system settings items - sounds, themes, etc.;
- **Include list** – lists all data from items set in **Options -> Registry Cleaner -> Include List**.

By default, the Registry is scanned only for the current user but you can select the option to scan all Windows accounts in the commands section in the upper-left part of the window. After the scanning process has completed, a tree-like structure with all found Registry items will be displayed. Parent nodes in bold are the categories with the number of found items in brackets. All found items in a category are presented as its sub-items. If you want to see the full path in the Registry of a found item, you must expand it by clicking ">". If the found item is data of a Registry value you will see the Registry key and the value separated with a vertical bar -- |.

Forced Scan – An additional mode which allows you to choose a specific location to search for in the Windows Registry, as well as for a specific word/part of a phrase.

Revo Registry Cleaner – User Guide



On the top of the screen with found items you will see their total number and a button that allows you to select/unselect all items in the list. You can also click on the check mark in front of any item to select or unselect it.

Right-click any item to open a context menu to help with your decision-making. Most options should be self-explanatory but note the following:

Unselect This – removes the check mark on current item;

Select All – selects all items in the list;

Revo Registry Cleaner – User Guide

Select None – unselects all items in the list;

Collapse All – collapses the tree to the main items (categories);

Expand All – expands all parent items in the tree so their children become visible;

Expand to Data – expands the whole tree, so all data is visible;

Open in Registry Editor... – opens the key in the Windows Registry (regedit.exe);

Add to exclude list – adds the selected key to the exclusion list which protects it from deletion in the future; you can edit the exclude list from the Revo Registry Cleaner options;

Export List to – export the data to TXT, HTML, CSV, XML, or XLS.

After you have selected the items that you want to delete, click the **Clean** button in the left commands panel. The **Clean** button shows you in brackets the total number of selected items in the tree.

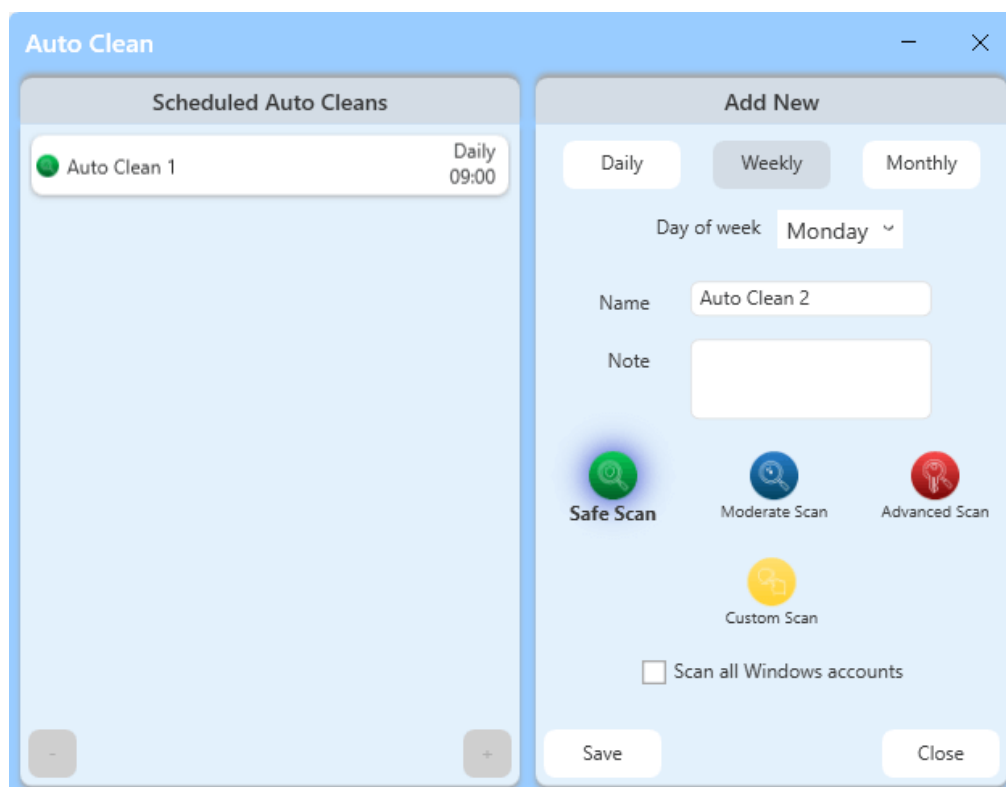
Clicking the **Clean** button, you will be asked if you want to create a System Restore Point and/or a full Registry backup prior to the removal of all selected Registry items. In addition, by default, all deleted Registry items are backed up separately. These backups can be accessed from the **Backup Center** tool.

Note: if the option **Skip warning messages shown by Revo Registry Cleaner** is unchecked, you won't be prompted to create a System Restore Point and/or a full Registry backup. Instead, Revo Registry Cleaner will automatically proceed based on what options are selected in **Options -> Registry Cleaner -> General**.

If you want to do a new scan, click the **Scan Again** button in the **Commands Panel**. That will bring you back to the home screen where you can choose the scanning mode again.

You can automate the process of scanning and cleaning your Registry using the **Auto Clean** command from the **Commands Panel** on the left.

Revo Registry Cleaner – User Guide



Once the command is executed you are shown a window split into two parts. On the left side, you will see a list of all automatic cleanup tasks that you have currently scheduled. On the right, you can change the settings of a selected scheduled task or create a new one. Every saved scheduled Auto Clean task has a **Name**, and you may type a **Note**, as well as adjust if the clean operation is to be **Daily** at a specific time, **Weekly** at a specific day of the week, or **Monthly** on a specific date of a month. You can choose which scan mode to use for the scanning process and if Revo Registry Cleaner should scan only the current user or all users. Once the **Save** button is clicked, the Auto Clean task is saved and listed on the left. To **Edit** an already saved task, select it from the list, change the desired parameters on the right, and save it again. To **Delete** an Auto Clean task, select it from the list, and click the “-” button in the lower-left corner.

After a successful Auto Clean operation, a notification will appear in the lower-right corner of your desktop.

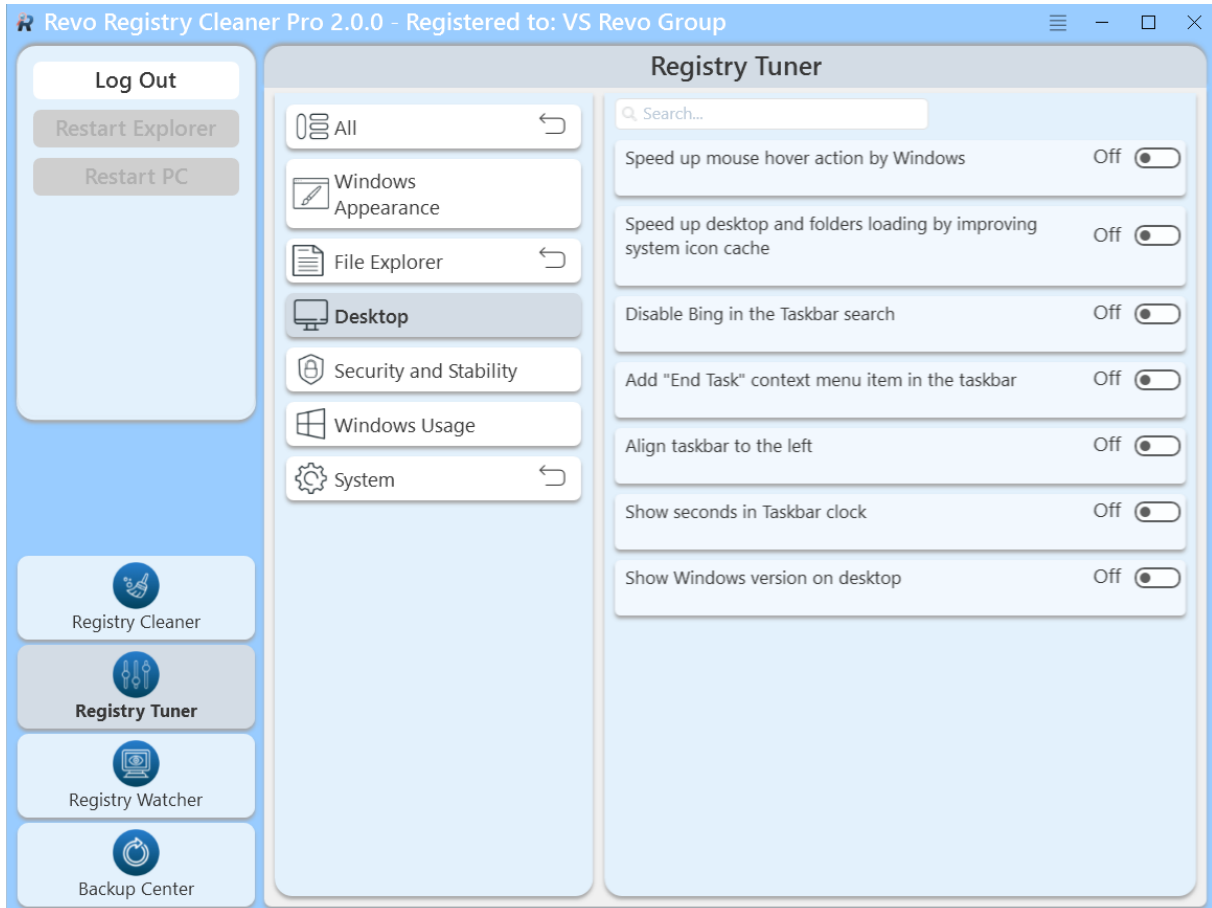
3. REGISTRY TUNER

The Registry Tuner gives you access to more than 50 tweaks and options to easily change and optimize Windows’s settings. The Registry Tuner separate all tweaks into six categories based on their effect. The first one is “Windows Appearance” and is opened by default. Most of the tweaks in the Registry Tuner are turned on/off with a single click over their corresponding slider, however for some of them there is a drop-down menu with a few options to choose from. A small text label “**by Revo Registry Cleaner**” is displayed beneath

Revo Registry Cleaner – User Guide

any tweak that is modified to remind you it isn't at its default state. Depending on the type and scope of the tweak, some of them may require you to log out, restart File Explorer, or restart your computer. You will be informed by a small text label in red in the lower part of the list of items you have modified. If a log out, File Explorer restart or a full system reboot is necessary, you should see a corresponding button on the left to perform that action immediately.

The Registry Tuner also includes a **Search** field that can help you filter the tweaks to find the one you need.



3.1 Windows Appearance

Contains the following tweaks:

- **Speed up Aero Snap to make thumbnail display faster** - [Available on Windows 7, 8.1, 10, 11], [Requires restarting File Explorer] – increase the speed with which thumbnails are displayed when you hover with the mouse over opened windows in the taskbar.
- **Boost display speed on Aero peek** - [Available on Windows 7, 8.1, 10 11] - Aero Peek will be shown faster.

- **Speed up Windows menus** - [Available on Windows 7, 8.1, 10, 11] – increases the speed with which menus are displayed.
- **Enable Windows 10 like context menu** - [Available on Windows 11], [Requires restarting File Explorer] – bypasses the modern context menu introduced in Windows 11, and displays the classic one directly.
- **Disable Ads in Windows 11** - [Available on Windows 11], [Requires logging off] - Windows shows various types of ads and automatically installs apps from the Windows Store to promote them. Turn this tweak on to disable this behavior.
- **Disable Blur on Sign-in Screen** - [Available on Windows 10, 11], [Requires logging off] – the sign-in screen shows its background image with a blur effect applied. Turn this tweak on to disable this feature.
- **Use classic battery indicator and power applet** - [Available on Windows 10, 11], [Requires logging off] - if you don't like the modern look of the battery indicator and power applet, turn this tweak on to enable the classic ones.
- **Enable Battery Life Estimated Time** - [Available on Windows 7, 8.1, 10, 11], [Requires logging off] - turn this tweak on if you want to see the battery lifetime remaining in both the battery saver flyout and the battery power icon tooltip.
- **Disable Widgets in Windows 11** - [Available on Windows 11], [Requires logging off] - if you don't need any widgets or find them annoying, enable this tweak to hide them.
- **Remove the Shortcut Arrow Icon** – hides the arrow icon overlay on shortcuts (Desktop).
- **Disable aero peek** – disables Aero Peek entirely.

3.2 File Explorer

Contains the following tweaks:

- **Disable the “SV2 Navigation Pane”** - [Available on Windows 7, 8.1, 10, 11] - use this tweak to hide the navigation pane from File Explorer.
- **Disable “You have new apps that can open this type of file”** - [Available on Windows 7, 8.1, 10, 11], [Requires logging off] – turn the tweak on to disable the notifications for newly installed apps.
- **Add “Command Prompt As Administrator” in Context Menu** - [Available on Windows 7, 8.1, 10, 11] - you can add the “Command Prompt As Administrator” command to the context menu of File Explorer. This will open a new command prompt with administrator privileges to the current directory.
- **Set “Do this for all current items” checked by default** - [Available on Windows 7, 8.1, 10, 11] - using this option, you can enable the “Do this for all current items” checkbox by default in the file operation conflict dialog.
- **Enable Auto-Completion in File Explorer** - [Available on Windows 7, 8.1, 10, 11], [Requires logging off] - enabling this feature will automatically append suggested text to the text you type in the address bar, run dialog, open, and save file dialogs.

- **Open File Explorer to This PC, OneDrive, Downloads, or Quick Access Explorer** - [Available on Windows 10, 11] - Choose which location the File Explorer will open when a new instance is started.
- **Disable Pop-Up Descriptions** - [Available on Windows 7, 8.1, 10, 11], [Requires restarting File Explorer] - Disable the info popup tips when you keep the mouse over a file or folder.
- **Show Drive Letters First** - [Available on Windows 7, 8.1, 10, 11], [Requires restarting File Explorer] - Use this option if you want to see the drive letter before its drive name.
- **Show Full Details When Deleting a File** - [Available on Windows 7;8,1;10], [Requires restarting File Explorer] - If enabled, Windows will show you more information when deleting a file.
- **Add Rotate Right/Left image to context menu** - [Available on Windows 7;8,1;10] - If you have images/photos that need to be rotated, use this option to add an easy way to do it via the context menu.
- **Enable Classic File Explorer Ribbon** - [Available on Windows 11], [Requires restarting File Explorer] - Turn this option on if you prefer the tabbed File Explorer in Windows 10.

3.3 Desktop

Contains the following tweaks:

- **Speed up mouse hover action by Windows** - [Available on Windows 7, 8.1, 10, 11], [Requires logging off] - Force Windows to execute mouse hover actions faster like showing tooltips or thumbnails.
- **Speed up desktop and folders loading by improving system icon cache** - [Available on Windows 7, 8.1, 10, 11] - Increase icon cache to improve the loading speed of folders and the desktop.
- **Disable Bing in the Taskbar search** - [Available on Windows 10, 11], [Requires logging off] - Turn on to disable search in Bing while typing in the taskbar.
- **Add “End Task” context menu item in the taskbar** – [Available on Windows 11], includes the mentioned option in the right-click context menu.
- **Align the Taskbar to the left** - [Available on Windows 10], [Requires restarting File Explorer] – Moves the taskbar buttons to the left of the screen.
- **Show seconds in taskbar clock** - [Available on Windows 10, 11], [Requires restarting File Explorer (Windows 10)] - Turn on to show seconds in the system clock on the taskbar.
- **Show Windows version on desktop** - [Available on Windows 7, 8.1, 10, 11], [Requires logging off (Windows 11 - Restart Explorer)] - Easily see which version of Windows OS you are running by displaying it on the right bottom corner of the desktop.

3.4 Security and Stability

Contains the following tweaks:

- **Disable AutoPlay feature on drives to avoid virus injection** - [Available on Windows 7, 8.1, 10, 11] - Improve system security by removing the AutoPlay feature for removable devices.
- **Close unresponsive processes to avoid system crashes** - [Available on Windows 7, 10, 11] - Use this feature to enable automatic closing of unresponsive processes.
- **Disable the security warning and blocking of downloaded files** - [Available on Windows 7, 10, 11] - Suppress showing of warnings and blocking of downloaded files.
- **Add the “Take Ownership” option in the File Explorer context menu** - [Available on Windows 7, 8.1, 10, 11] - Add the “Take Ownership” context menu command to files and folders to quickly gain full access to them.
- **Disable SmartScreen in Windows 11** - [Available on Windows 11], [Requires logging off] - Turn on to disable the SmartScreen security feature in Windows, Edge, and the Windows Store.
- **Show BSOD details instead of the sad smiley in case of a blue screen error** - [Available on Windows 10, 11], [Requires a PC restart] - Turn on if you want to revert to the classic BSOD with more details and without the emoticon.
- **Enable access to network drives from elevated apps running as administrator** - [Available on Windows 7, 8.1, 10, 11], [Requires logging off] - Turn on to grant access to network drives from elevated apps running as administrator.
- **Disable User Account Control (UAC)** - [Available on Windows 7, 8.1, 10, 11], [Requires a PC restart] - Turn this tweak on if you want to completely disable the User Account Control feature.
- **Enable Anti-Adware protection feature in Windows Defender** - [Available on Windows 10, 11], [Requires logging off] - Turn on to activate the Windows Defender Adware blocker.
- **Enable USB Write Protection** - [Available on Windows 7, 8.1, 10, 11], [Requires a PC restart] - Once enabled, write access to USB mass storage devices will be restricted.
- **Enable Camera On/Off notification** - [Available on Windows 7, 8.1, 10, 11], [Requires logging off] - Turn on to get notified every time the camera is turned on or off.
- **Disable AutoEndTasks at Shut Down, Restart, or Sign Out** - [Available on Windows 7, 8.1, 10, 11], [Requires logging off] - Minimize the risk of losing data or unsaved progress by disabling the Auto End Tasks feature.
- **Force Windows to make crash dump upon program crash** – Creates a task to initiate creating a crash dump when an app crashes.

3.5 Windows Usage

Contains the following tweaks:

- **Enable Windows Photo Viewer** - [Available on Windows 10, 11] - Enable if you prefer the classic Windows Photo Viewer as a default image viewer in Windows 10 and 11.
- **Disable Windows Background Apps to conserve power** - [Available on Windows 8.1, 10, 11] - Turn on to disable the possibility of apps running in the background, thus optimizing power consumption.
- **Disable property handles extraction for media files(data read from properties)** - [Available on Windows 7, 8.1, 10, 11] - Turn on if you have folders with various media files and do not want to wait for Windows to extract metadata from them, thus speeding up files loading.
- **Add Classic User Accounts to Control Panel** - [Available on Windows 7, 8.1, 10, 11] - Enabling this option adds Classic User Accounts to the Control Panel.
- **Disable “- Shortcut” text for new shortcuts** - [Available on Windows 7, 8.1, 10, 11], [Requires restarting File Explorer] - Use this option to remove “- Shortcut” label from newly created shortcuts.
- **Disable “This App is Preventing Shutdown or Restart” Screen** - [Available on Windows 7, 8.1, 10, 11] - Turn this option on to disable the screen that lists processes that prevent Windows from logging off, restarting, or shutting down.

3.6 System

Contains the following tweaks:

- **Enable Legacy Boot Menu** - [Available on Windows 10, 11] - Switch to the Legacy Boot Menu policy that allows pressing the F8 key during boot to bring up the boot menu to enter Safe Mode, Safe Mode with Networking, etc. By default, in Windows 10 and 11 this is disabled.
- **Enable classic Alt+Tab (with smaller icons and no previews)** - [Available on Windows 7, 10, 11], [Requires restarting File Explorer] - Turn on if you dislike the new UI for alt-tabbing with the large previews, and instead prefer the previous UI with small icons.
- **Disable driver updates via Windows Update** - [Available on Windows 7, 10, 11], [Requires logging off] - Turn on to take control of driver updates by disabling their automatic updates through Windows Update.
- **Enable the Recycle Bin on Removable Drives** - [Available on Windows 7, 8.1, 10, 11], [Requires to PC] - Useful to prevent permanent deletion of important files from removable drives.
- **Disable Store apps auto-updates** - [Available on Windows 10, 11], [Requires logging off] - Turn on to prevent Windows from updating Store apps automatically without your confirmation. You can update apps manually.
- **Disable Power Throttling** - [Available on Windows 7, 8.1, 10, 11], [Requires logging off] - Power Throttling limits the resources used by inactive apps. There is an

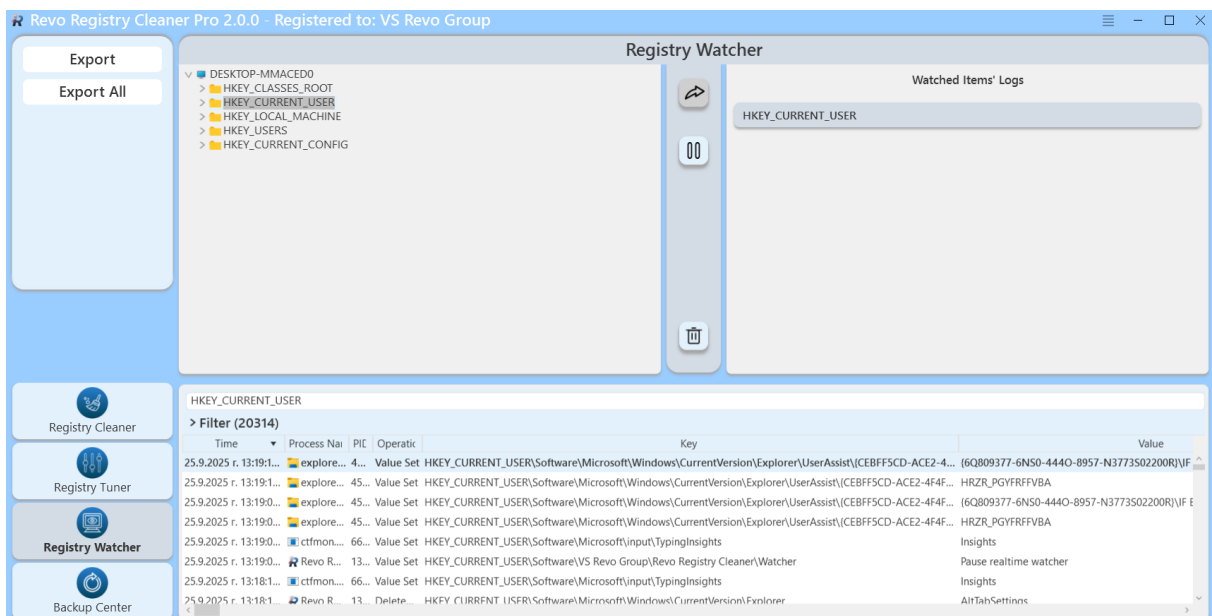
Revo Registry Cleaner – User Guide

algorithm that detects active tasks and keeps them running while all other processes are throttled. You can disable this feature to prevent some issues with those processes.

- **Disable Telemetry and Data Collection by Windows** - [Available on Windows 7, 8.1, 10, 11], [Requires logging off] – Turn this tweak on to prevent Windows from sending telemetry and various statistical data to Microsoft.
- **Disable Microsoft Edge From Running in The Background** - [Available on Windows 7, 8.1, 10, 11], [Requires logging off] - Turn on to stop Microsoft Edge from running in the background all the time.
- **Clear Virtual Memory Page File at Shutdown** - [Available on Windows 7, 8.1, 10, 11], [Requires logging off] - This option will save some space on your main drive but it could lead to an increased shut down duration.

4. REGISTRY WATCHER

Using the Registry Watcher module, you can easily track what changes are made in the Registry and which process is responsible for them. Click the **Registry Tuner** button in the lower part of the Command Panel to activate the module. The screen of the module is separated into four main parts. On the top left is the Registry tree where you can navigate to find the key you are interested in. To start monitoring a key, you need to select it, and click the arrow button that is in-between the two panels. That moves the selected key to the top right pane which lists all keys selected for monitoring.



The monitoring of a key starts immediately after it is added. To pause monitoring, select the key from the top right panel, and press the **Pause** button. That will switch it into a **Start/Resume** button. If you do not want to monitor a key anymore, you can delete it from the list with the **Delete** button.

Revo Registry Cleaner – User Guide

In the lower part of the screen on the module is the **Result Pane** with **Filter** options. Its contents are updated in real-time, showing data captured for the currently selected monitored key, with many properties like Time of modification, Process Name, PID (Process ID), Registry Operation, Registry Key, Registry Value, Value New Data, Value Old Data, Value Data type, etc.

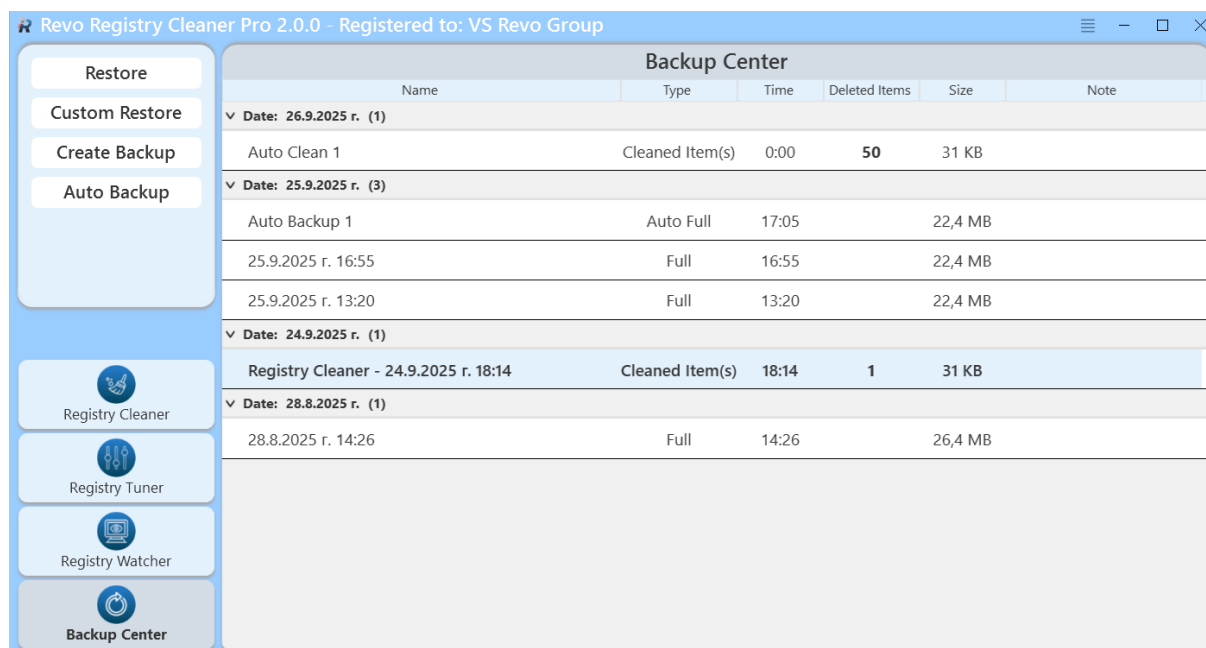
In the upper part of the pane is the **Filter** section which can be used to filter results. You can use the **Highlight** field to highlight results. Monitored data for the chosen Registry key can be exported using the context menu command “**Export List to File**”. Supported formats are TXT, CSV, and XLSX.

By right-clicking an item in the results, you can select “**Clean**” to purge all result or “**Open in the Registry Editor...**” which will open the selected entry in the Windows Registry Editor.

All captured data for all monitored keys can be exported using the corresponding **Export All** button from the command panel. Supported formats are TXT, CSV, and XLSX.

5. BACKUP CENTER

The **Backup Center** module lets you create and manage different types of Registry backups done during operations of the Revo Registry Cleaner or intentionally by you. You can start it with a click of the lowest modules button in the Command Panel. Its main screen shows sorted by date all made backups with their properties.



From the Command Panel, you can create a new partial or full Registry backup by clicking the **Create Backup** button. It opens a window where you can choose the name of the backup, type a comment/note, and select what backup to create. If you wish to backup the

entire Registry, make sure “**Backup Whole Registry**” is checked. Otherwise, you will be able to select a specific key to be backed up. Registry keys in gray cannot be backed up.


You can automate the process of creation of backups using the **Auto Backup** command from the **Commands Panel** on the left. After you click Auto Backup, you will be presented with a split window. The left part shows a list of saved scheduled Auto Backups, and the right part allows you to create and save a scheduled Auto Backup with different parameters, based on your needs. Every saved scheduled Auto Backup task has a **Name**, and you may type a **Note**, as well as adjust if the clean operation is to be **Daily** at a specific time, **Weekly** at a specific day of the week, or **Monthly** on a specific date of a month. If you wish to backup the entire Registry, make sure “**Backup Whole Registry**” is checked. Otherwise, you will be able to select a specific key to be backed up. Registry keys in gray cannot be backed up. Once you click **Save**, the Auto Backup is saved and listed on the left. To **Edit** an already saved Auto Backup task, select it from the list, change the desired parameters on the right, and save it again. To **Delete** an Auto Clean task, select it from the list, and click the “-” button in the lower-left corner.

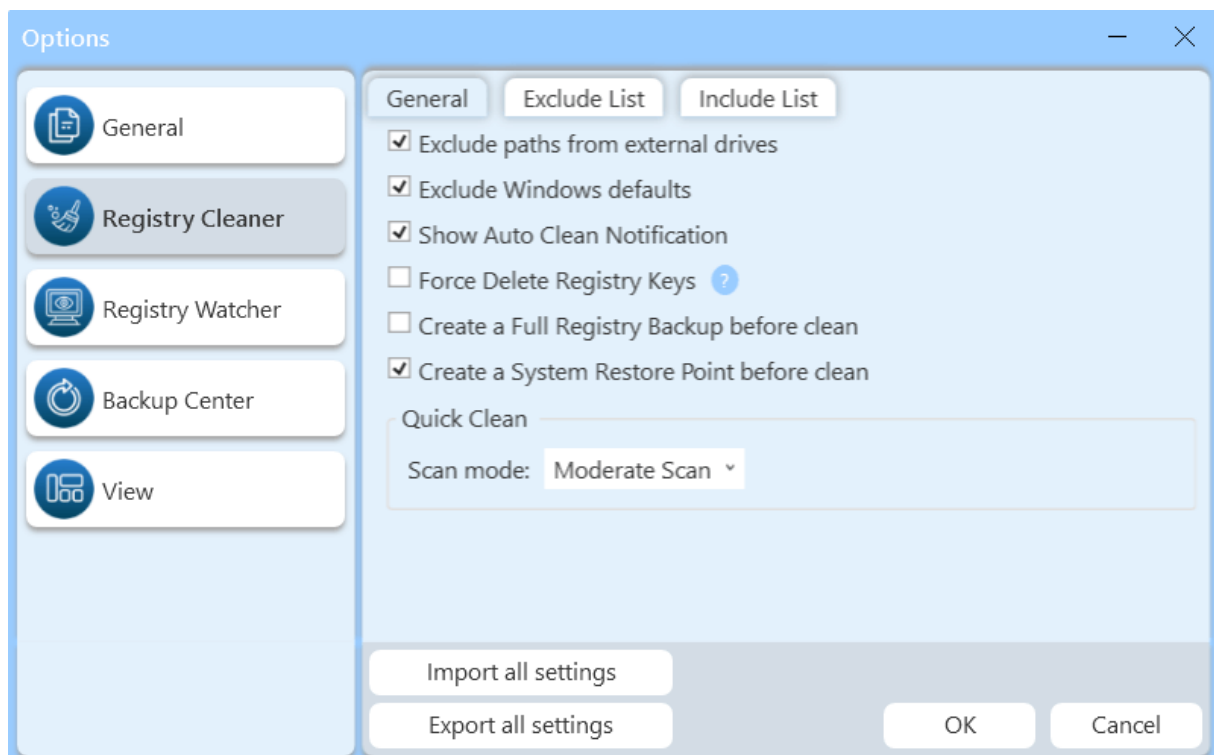
After a successful Auto Backup operation, a notification will appear in the lower-right corner of your desktop.

Navigating the list of completed backups, you can restore all data from a backup by selecting it, and using the “**Restore**” button from the **Commands Panel**, or you can perform a partial restore by using the “**Custom Restore**” button from the **Commands Panel** which will open a window, allowing you to select which exact entries you wish to restore.

Using the context menu is another way to execute the “Restore” or “Customs Restore” commands, as well as to delete a single backup or all backups using the “**Delete**” or “**Delete All**” commands, respectively.

6. MENU/OPTIONS

To view all Revo Registry Cleaner’s Options, click the Menu button  in the top right corner and select **Options**.



The remaining menu items are self-explanatory.

6.1. General

Provides general options for Revo Registry Cleaner:

- **Current Language** – drop-down menu with all available languages for Revo Registry Cleaner.
- **Check for updates on startup** – checks whether a new version is available by connecting to www.revouninstaller.com on startup, only once per day. No personal information is sent.
Note: you must allow Revo Registry Cleaner to connect to the Internet in your firewall.
- **Update automatically in the background** – enables automatic download and update of Revo Registry Cleaner. You will be notified on the next startup of the program if such an update had occurred.
- **Skip warning messages shown by Revo Registry Cleaner** – enable this option if you do not want to receive warning messages. For example: “Are you sure you want to delete the selected item?”

6.2. Registry Cleaner

6.2.1. Registry Cleaner (General)

- **Exclude paths from external drives** – if enabled, during scanning for invalid and unnecessary Registry entries, paths from external devices, even though they do not exist at the moment, won't be listed, to potentially protect any software/data stored on removable/external devices.
- **Exclude Windows defaults** – if enabled: for additional protection, during scanning for invalid and unnecessary items, Windows-related paths that are invalid, but exist for backward compatibility or other reasons and are in most cases recreated are excluded.
- **Show Auto Clean Notification** – this option controls whether notifications for completed scheduled Auto Clean operations are shown or not.
- **Force Delete Registry Keys** – enables additional administrative permissions in order to ensure the removal of selected entries.
- **Create a System Restore Point before cleaning** – if Windows System Restore is enabled, Revo Registry Cleaner submits a request to create a System Restore Point.
- **Create a full Registry backup before cleaning** – if enabled, Revo Registry Cleaner creates a full Registry backup which can be restored via the Windows Recovery Console in Windows Recovery Environment.
- **[Quick Clean] Scan Mode:** – select which scanning mode will be used during Quick Clean.

6.2.2. Registry Cleaner (Exclude List)

During a scanning operation, Registry Cleaner will ignore any keys included in this list. You can add or remove items to/from this list using the **Add** and **Remove** buttons.

A Registry key can only be excluded by adding the full path to the key. For example:

HKEY_LOCAL_MACHINE\SOFTWARE\Classes

There is an option for each Registry key called "Include Sub keys". If enabled, this will also exclude all sub-keys of the selected Registry key, and not just the main key.

You can enable or disable each individual exclusion entry by checking or unchecking the box in front of it. If an entry is checked, the key is excluded from scanning.

6.2.3. Registry Cleaner (Include List)

If you want to clear the contents of specific keys using the Registry Cleaner, you can add them to the **Include list**.

Note: The Include List is processed only in **Managed Scan** and if the category **Include List** is selected.

A Registry key can only be included by adding the full path to the key. For example:

HKEY_LOCAL_MACHINE\SOFTWARE\Test

There is an option for each Registry key called **Include Sub keys**. If enabled, all sub-keys of the selected Registry key will be emptied as well.

You can enable or disable each individual inclusion entry by checking or unchecking the box in front of it. If an entry is checked, the key is included in the scan.

IMPORTANT: when adding Registry keys to the Include List, be careful which keys you add and how you add them so as to avoid the deletion of important and/or personal data.

6.3 Registry Watcher

- **Maximum logs' folder size XX MB** – you can set the maximum size in megabytes of all logs made by the **Registry Watcher**. When that limit is reached, monitoring of all keys is automatically paused.

6.4. Backup Center

- **Backup Folder:** – Enter the path to a folder or use the **Browse** button to select a folder where backups are stored.
- **Auto Delete Backups** – to free up space, backups can be automatically deleted when one or more conditions are met:
 - **When older than XX days** – if enabled, backups older than the entered number of days will be automatically deleted.
 - **When all backups are larger than XX MB** – if enabled, when the backup folder reaches the entered size in megabytes, older backups will be automatically deleted.
 - **Delete only Auto Backups** – if enabled, only scheduled Auto Backups will be automatically deleted. This option can be enabled only in combination with one of the two options above.
- **Show Auto Clean Notification** – this option controls if notifications for scheduled Auto Backup are shown or not.

6.5. View

- **Theme** – you can choose a color theme for Revo Registry Cleaner's user interface. Available are: Default, Dark, Green, Gray, Black.
- **Reset default view settings** – resets most of the changes made to Revo Registry Cleaner's user interface.

7. COMMAND LINE SUPPORT

Some Revo Registry Cleaner operations can be executed from a command line. Supported command line operations and their arguments are:

Registry Clean - you can clean found as unnecessary and obsolete Registry items specifying desired scanning mode. All found items are automatically backed up and deleted

Syntax:

Revo Registry Cleaner **-clean -scanning mode -affected accounts**

Where the parameters are:

-clean – operation type

-mode - mode of the scanning - safe, moderate, or advanced are possible parameters

-affected accounts – if this parameter is missing current Windows account is cleaned. Or add **“all”** to scan and clean all Windows accounts

Examples:

“Revo Registry Cleaner.exe” -clean -safe → Safe scan for current user

“Revo Registry Cleaner.exe” -clean -moderate -all → Moderate scan for all users

Registry Backup - you can create full or partial Registry backup

Syntax:

Revo Registry Cleaner **-backup -type “Registry path”**

Where the parameters are:

- backup – operation type

- type – if specified **“full”** full backup is done, if specified **“key”** a Registry key must follow

Examples:

“Revo Registry Cleaner.exe” -backup -full → Creates Full Registry Backup

“Revo Registry Cleaner.exe” -backup -key HKEY_CURRENT_USER\Control Panel → creates backup of the key HKEY_CURRENT_USER\Control Panel

Registry Watch - you can start and stop watching changes in a specified Registry key

Syntax:

Revo Registry Cleaner **-watch -action “Registry path”**

Where the parameters are:

- watch– operation type

- action – if missing it is considered as start action, or **“stop”** a Registry key must follow

Examples:

"Revo Registry Cleaner.exe" -watch HKEY_CURRENT_USER → starts watching HKEY_CURRENT_USER

"Revo Registry Cleaner.exe" -watch -stop HKEY_CURRENT_USER → stops watching HKEY_CURRENT_USER

8. HOW TO RESTORE A FULL REGISTRY BACKUP

Full Registry backups can be created:

- before a Registry cleaning operation;
- manually, from the Backup Center;
- automatically, by creating a scheduled task from the Backup Center.

IMPORTANT: restoring a full Registry backup should only be done if Windows Restore/Backup Manager cannot restore removed items or if Windows no longer starts properly.

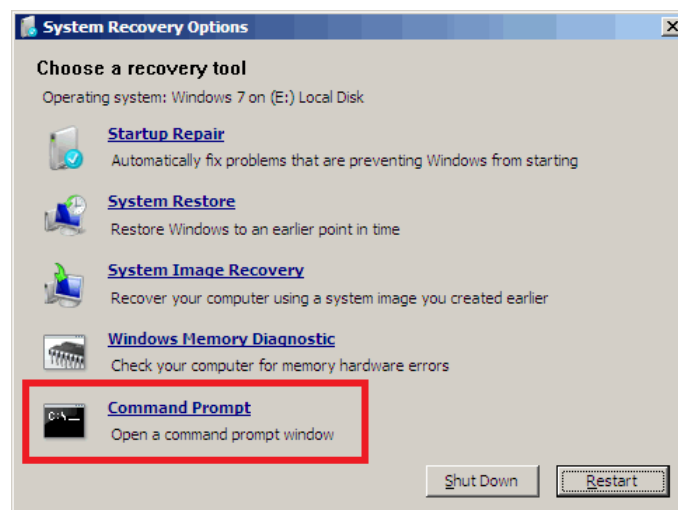
NOTE: The procedure to restore a full Registry backup will vary depending on the version of your computer's operating system, as follows:

8.1. For Windows 7

1. Choose which full Registry backup you want to restore from the Backup Center.
2. Click the **Restore** button.
3. Restart the computer. When the machine first starts again, it will generally list some equipment installed on your machine, the amount of memory, hard drives installed, etc. At this point, you should begin tapping the F8 key repeatedly until you are presented with a Windows Advanced Options menu.

NOTE: Some PCs from OEM manufacturers may use a different function key to F8, so refer to the instructions that came with your computer.

4. Select the **Repair Your Computer** option.
5. Follow screen instructions until you see the **System Recovery Options** window.



6. Select **Command Prompt**.

Enter (type) each of the following commands (in **bold**). Press Enter after each step:

(Assuming you have installed Windows on "Local Disk (C :)")

Step 1: **C:**

Step 2: **CD Users**

Step 3: **DIR**

(A list with folder names will appear, including your user name, remember it for the next step.)

Step 4: **CD "XXX\AppData\Local\VS Revo Group\ Revo Registry Cleaner\Backups\Last\"**

*(Replace **XXX** with your user name determined in step 3. Ensure you include the quotation marks above.)*

For the portable version of Revo Registry Cleaner, you should navigate to the folder where you have extracted the software (as an example):

C:\Users\User\Desktop\Revo Registry Cleaner Portable\Data\UserXXX\Backups\Last

Step 5: **ren Restore.dat Restore.bat**

Step 6: **Restore.bat**

8.2 For Windows 8, Windows 10, and Windows

11

You need to start the computer in an unusual way to find the **Command Prompt** option. Begin by pressing and holding the **Shift** key and only then may you reboot your computer as normal. Continue to hold the key down until the computer fully restarts and you see the **Choose an Option** screen.

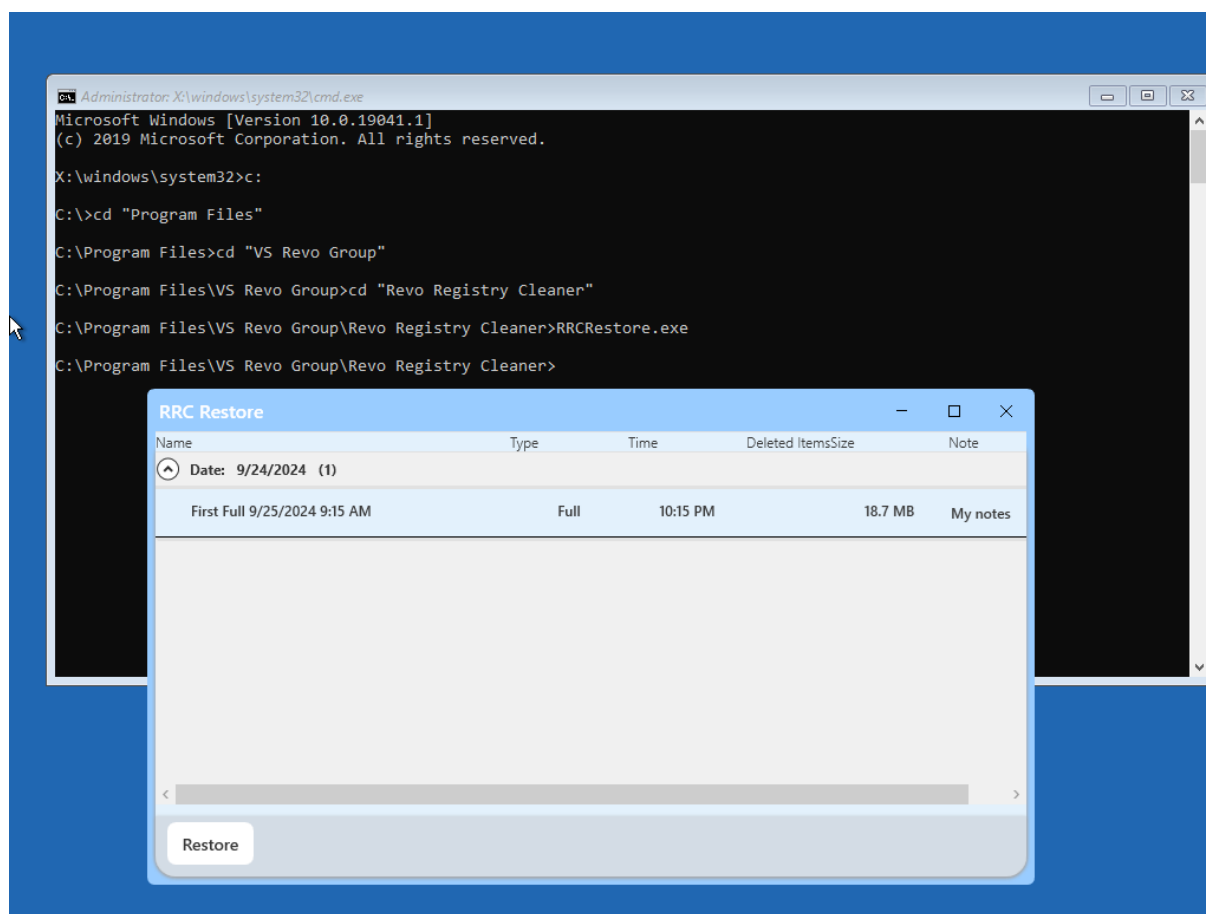


to proceed as follows:

- 1 - Click the **Troubleshoot** button.
 - 2 - Click the **Advanced Options** button.
 - 3 - Click the **Command Prompt** button.
 - 4 - Log into your account, and you will see the **Command Prompt** window.
- Enter (type) each of the following commands (in **bold**). Press Enter after each step:
(Assuming you have installed Windows on “Local Disk (C :)”)

Step 1: C:

- *Step 2: CD “Program Files”*
- *Step 3: CD “VS Revo Group”*
- *Step 4: CD “Revo Registry Cleaner”*
- For the portable version of Revo Registry Cleaner, you should navigate to the folder where you have extracted the software (as an example):
C:\Users\User\Desktop\Revo Registry Cleaner Portable\x64”
Or
C:\Users\User\Desktop\Revo Registry Cleaner Portable\x86” (for 32 bits systems)
- *Step 5: RRCRestore.exe*
- *Step 6: Select the backup you want to restore*
- *Step 7: Click “Restore”*



9. REGISTRATION/ACTIVATION AND UPDATE SUBSCRIPTION

Revo Registry Cleaner Pro has a 30-day free and fully functional trial, during which you can use it without any restrictions. The trial period automatically starts on the first installation of the program on a given system.

You can check the title bar on the top of Revo Registry Cleaner Pro's main window to see how many days you have until the end of the trial period, and every time you close Revo Registry Cleaner Pro, you will see a reminder notifying you how many days you have left. If you want to continue using Revo Registry Cleaner Pro after the trial period has ended, you will have to purchase a license from our website – www.revouninstaller.com.

When you purchase a license, you will receive a **Serial Number** with a specific update subscription period. You must enter this serial number in the registration form in Revo Registry Cleaner Pro, together with a registration name (user name). There are two possible ways to activate or update your subscription to Revo Registry Cleaner Pro - to activate it online or to activate it by a specially generated file by Revo Registry Cleaner Pro.

Once activated, your version of Revo Registry Cleaner Pro will work without a time limitation, but you will be able to update it only to the latest released version during your subscription period. After that period's expiration, you will not be able to install newer versions of Revo Registry Cleaner Pro, released after the date of expiration. You can check the

subscription duration of your license if you click the **Menu button** on the top right of the main window, and select **About**.

If you decide to renew (extend) the update subscription period of Revo Registry Cleaner Pro, but it has not yet expired, the subscription period of the newly entered **Serial number** will be added to the remaining days of your current update subscription period.

If you have any questions or problems activating Revo Registry Cleaner Pro please do not hesitate to contact us at support@revoregcleaner.com or registration@revoregcleaner.com. Please, include details of your purchase, like full name, order ID, e-mail, and License Key received from us.

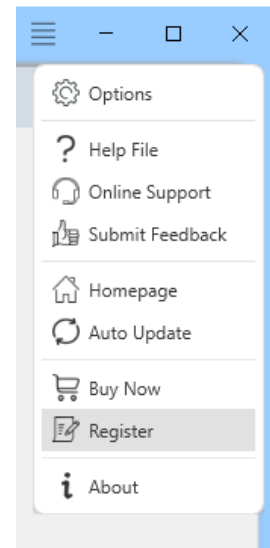
9.1. Activate Online

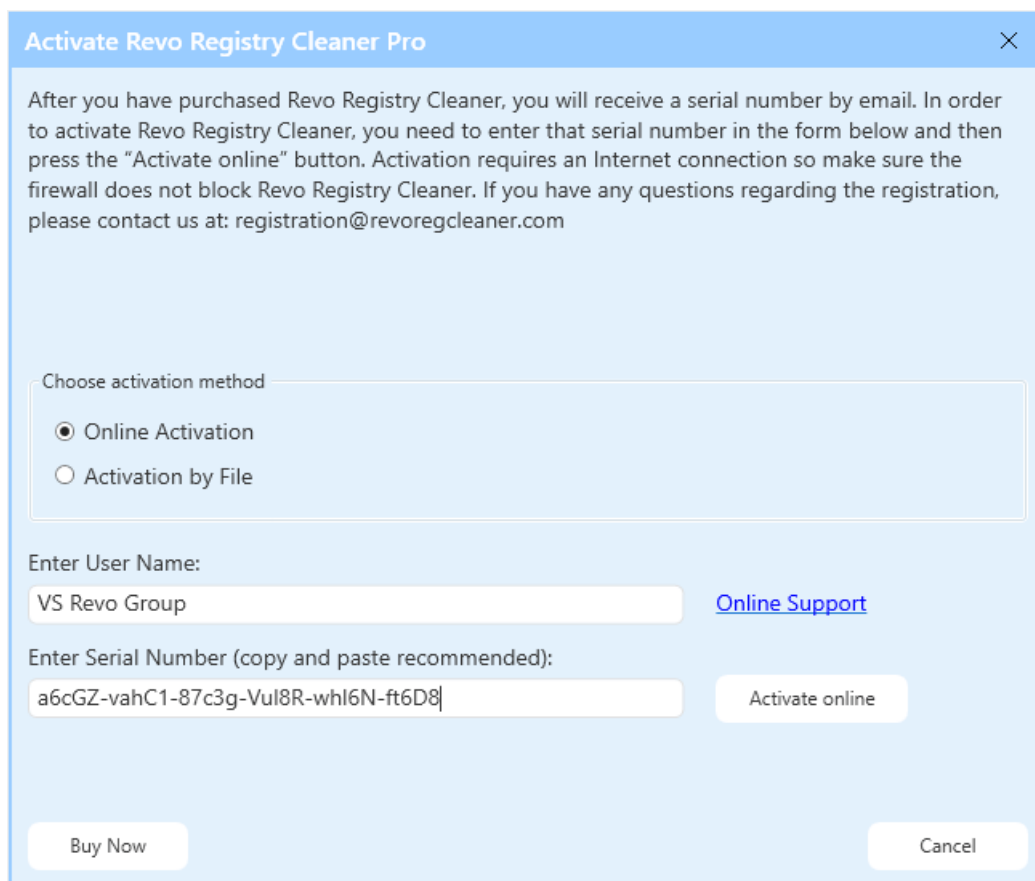
To activate Revo Registry Cleaner Pro online, you must first select that option in the Registration window (it is selected by default), and must have permissions to access the Internet, so it should be allowed in your firewall.

To open the **Register/Update Subscription Form**, and enter the **Serial Number** and your **Name** you have to:

1. Run Revo Registry Cleaner Pro.
2. Click the **Menu** button.
3. Choose **Register or Update Subscription**.

Another way to open the registration window is to click the Register link, on the left of the Menu button.





In the first field, you need to enter a user name. The user name can be whatever you wish. In the second field, you need to enter your serial number.

IMPORTANT: the serial number contains lower and upper case characters, as well as numbers, and it is case-sensitive. Thus, we recommend that you copy and paste the serial number from the received email, as that is easier, faster, and more reliable than typing it manually.

After you have filled out both fields, click the **Activate Online** button. You will see a text in the registration window saying that Revo Registry Cleaner Pro is contacting its server for activation.

The activation requires an Internet connection because Revo Registry Cleaner Pro needs to contact our activation server to validate your License.

If your computer does not have an Internet connection, you have another option to activate Revo Registry Cleaner Pro - **Activation by File**.

9.2. Activation by File

To activate or update a subscription to Revo Registry Cleaner Pro by file, first you must select that option from the Registration window.

Revo Registry Cleaner – User Guide

To open the **Registration/Update Subscription Form**, and enter the **Serial Number** and your **Name** you have to:

1. Run **Revo Registry Cleaner Pro**.
2. Click the **Menu button**.
3. Choose **Registration** or **Update Subscription**.

In the first field, you need to enter a user name. The user name can be whatever you wish. In the second field, you need to enter your serial number.

After you have filled out both fields, click the **Save File** button. This will bring up a window that will allow you to save a .rrcaf file with a name and location of your choice. After you save the file, send it to us by email (to registration@revoregcleaner.com), and we will send you back the **Unlock Key**, which you must, in turn, enter in the same registration form, and click the **Activate** button.

After the activation is complete, restart Revo Registry Cleaner Pro to check the registration status in the title bar and the About window:

- The title bar of the main window of Revo Registry Cleaner Pro;
- **Menu button -> About**.

If the activation is successful you should see - **Registered to [Your Registration Name]**.

9.3. Deactivate

In case you want to use your Revo Registry Cleaner Pro's license on another computer, or you are changing your current computer, you can transfer the currently activated license – deactivate it on your current computer, then activate it again on your other/new computer.

To start the deactivation process, follow these steps:

1. Run **Revo Registry Cleaner Pro**.
2. Click the **Menu button** (in the top right corner).
3. Click **Deactivate...**

You will be prompted to confirm the operation, and then the deactivation will start. Note that the license deactivation requires an Internet connection. If you do not have an Internet connection, or your firewall blocks Revo Registry Cleaner Pro, the deactivation will be unsuccessful, and you will see a notification. In such a case, when you want to deactivate your license, but are unable to, please contact our support team for assistance.

Deactivating your license will disable the installed copy of Revo Registry Cleaner Pro on the computer, on which you have deactivated your license. Should you choose to activate it on the same computer again, instead of activating it on a different computer, you can do that. You will receive a message when you start Revo Registry Cleaner Pro on that same computer that the license was deactivated, and you can simply activate it again.

10. FREQUENTLY ASKED QUESTIONS (FAQ) and TROUBLESHOOTING

How do I clean my Registry with Revo Registry Cleaner?

You can choose the Quick Clean option which will automatically scan, clean, and remove any found faulty Registry entries. To manually clean your Registry, choose a preferred scanning method (Safe, Moderate, Advanced). Revo Registry Cleaner will scan your system and provide you with results once the scan is completed. After the scanning finishes, Revo Registry Cleaner will list all found Registry entries for you to review, verify, and delete.

Any deleted Registry data is backed up in the Backup Center, but you can also create a full Registry backup and a System Restore Point before starting the cleaning process, which is what we highly recommend.

How can I automatically clean my Windows Registry (Auto Clean)?

You can use the Auto Clean feature for automatic cleaning of your Registry in time intervals of your choice. It allows you to customize the type of Registry scan, the Registry categories to be scanned, and the scanning frequency (time and date).

What is the Managed scan in Revo Registry Cleaner?

The Managed Scan allows you to choose the Registry category(ies) you want to scan for invalid Registry items. This way you can include or exclude any categories by your preference and target the specific Registry types you need.

How can I be sure that my critical system entries won't be accidentally removed?

Our advanced algorithms target only invalid and unnecessary Registry entries while critical Registry items related to system processes and files are systematically excluded from the scanning process as a security precaution measure.

Safety is our priority and any deleted data is automatically backed up so you can easily recover it from our Backup Center.

How can the Registry Tuner help me?

The Registry Tuner enables you to adjust various aspects of your Windows environment: from enhancing performance to optimizing system behavior. Our Registry Tuner gives you the option to personalize your computer's behavior to match your unique requirements.

How can the Registry Watcher assist me?

The Registry Watcher monitors specified Registry keys in real-time, instantly identifying processes responsible for system modifications.

What does the Backup Center do?

The Backup center holds the backups of automatically deleted data during the cleaning processes. You can create personalized backups for specific keys, perform full Registry backups, or automate scheduled backups to ensure additional safety of your critical data. You can restore your backups at any time.